



THE LARGEST SCAFFOLDING BANK IN THE REGION

INFRASTRUCTURE ▪ OIL & GAS ▪
CONSTRUCTION ▪ PETROCHEMICAL ▪ MARINE

<http://www.dscaff.com/>

v. Sept 2024





INITIALLY A TRADING BUSINESS, DSCAFF HAS NOW BECOME A LEADING SCAFFOLDING SOLUTION PROVIDER WITH ONE OF THE LARGEST SCAFFOLDING BANKS AVAILABLE FOR RENT

Established in 2013, Dscuff is now a leading scaffolding service provider in Malaysia.

We provide industrial services across a number of industries, including oil & gas, petrochemical, pharmaceutical, power generation, marine, utilities, infrastructure, and construction.

Our multi-disciplined teams specialise in providing innovative, efficient and bespoke solutions to meet our clients challenges.

Dscuff's operating model places greater emphasis on collaboration and relationship building with our clients where we can share expertise and skills.

Our specialisations include:



c. 14,000 tonnes
tubular & modular scaffolding
assets



> 3.0 Million
safe manhours
without LTI
(as of end Dec 2023)



> 300 local & international
customers served
(from 2019 to 2023)



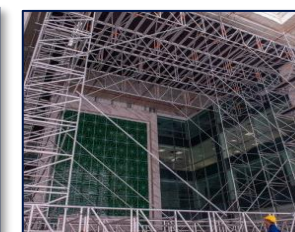
**RM40 mil paid-up capital +
RM17 mil bank facility**
(backed by
Navis Capital Partners)



Tubular Scaffolding



Modular Scaffolding

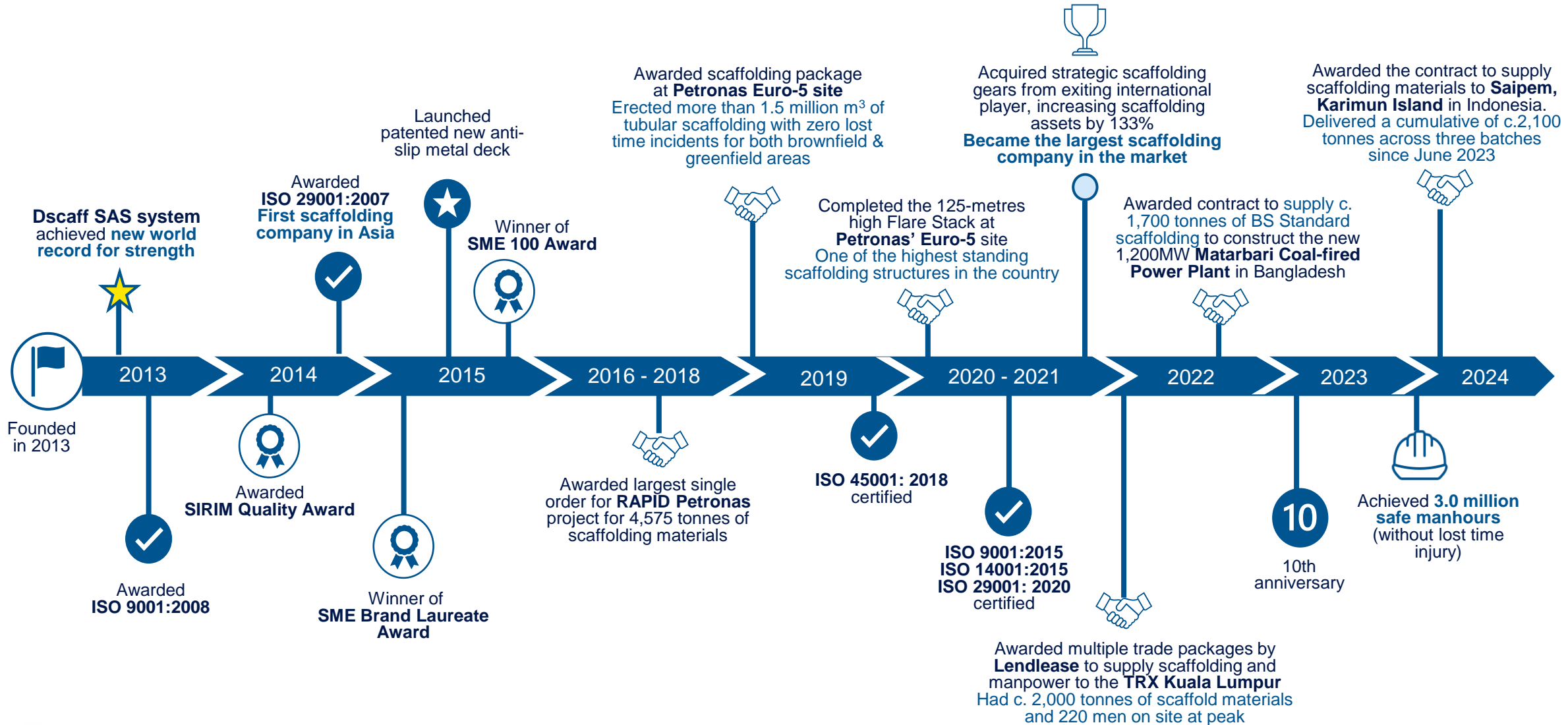


DXS Alloy Truss System



Safety System

SINCE OUR ESTABLISHMENT IN 2013, WE HAVE PROPELLED TO BECOME A LEADING PLAYER IN THE SCAFFOLDING INDUSTRY



WE PROVIDE INNOVATIVE, EFFICIENT AND BESPOKE SCAFFOLDING AND SHORING SOLUTIONS THAT CATER TO CUSTOMERS' SPECIFIC NEEDS

Service offerings

1 Dry-hire (Rental)

Provision of rental services for tubular and modular scaffolding as well as for DXS alloy truss systems



2 Contracting (Provision of manpower)

Provision of manpower services for scaffolding erection & dismantling, as well as general construction work purposes



3 Trading (Sales)

Selling of safety systems



Value-added services

3 Design & engineering

Services offered include designing technical drawing plans with inputs such as load calculation, type of scaffolding required and number of scaffolding required



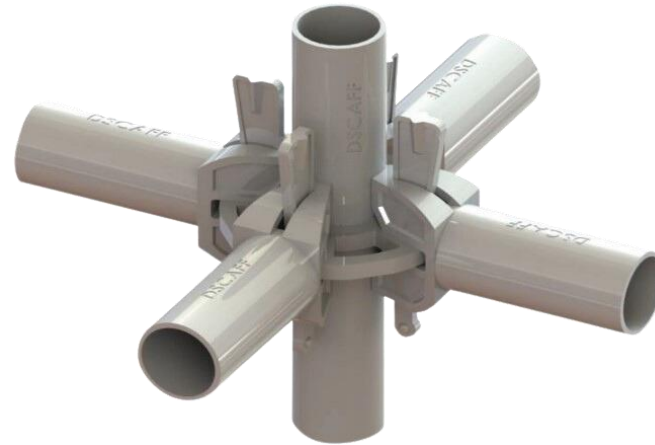
We are able to respond much faster to customers' design & engineering requests as we carry a practical range of compatible products. This will lessen the amount of planning work that needs to be done by customers and allow for quicker and smoother implementation.

DSCAFF HAS BOTH TUBULAR AND MODULAR SCAFFOLDING AVAILABLE FOR RENTAL

Tubular scaffolding



Modular scaffolding



Our **Modular** scaffolding system is the **latest and most sophisticated system in the industry** to date, due to its high load capacity, speed of assembly and versatility, and it can cater to all of your shoring and access needs.

 Design & Engineering Services available

Other scaffolding parts and equipment:



Couplers

Deck & boards

Baskets & castor wheel

ALL OF OUR SCAFFOLDING ASSETS ARE INDUSTRY-PROVEN AND IN COMPLIANCE WITH LOCAL AND MAJOR INTERNATIONAL STANDARDS

Scaffolding compliant with:

-  Malaysian Standard (MS)
-  European Standard (EN)
-  Australian/New Zealand Standards (AS/NZ)

Industries that use our scaffolding:



WE HAVE AN ON-SITE SCAFFOLDING MANAGEMENT SYSTEM THAT UNIFIES IT AND MANAGEMENT PROCESSES



TAG-IT

On-site scaffolding management system

- In-house developed scaffolding management system that was designed to increase efficiency of scaffolding documentation, administrative processes and reduce payment disputes
- The system can be accessed by both Dscuff personnel and our customers via desktops, smartphones or tablets.

On-site users

TAG-IT



Dscuff employees & certified scaffolding inspectors

- Input data including location of work sites, size and altitude of scaffolding, work requests, images of completed scaffolding, name of subcontractors and inspection results
- Summary of all documents for customers' approval



Dscuff customers

- Scaffolding request i.e. size & quantity of scaffold, location, duration and purpose
- Approval of documents



Outputs from TAG-IT

- Data used for monthly billing:
 - Erection and dismantling of scaffolding
 - Scaffolding dry-hire period
- Weekly inspection reminders for each scaffold

Key benefits to data users:

Cost saving

Eliminates the need for on-site administrative team or temporary offices as information can be input or accessed in real-time by users



Reduce errors and increases transparency

- Eliminates manual process prone to human error
- Reduces tedious monthly billing processes and helps to reduce billing & payment disputes



Database

Collection of past project data allows Dscuff to better estimate revenue & costs for similar future projects




DXS ALLOY TRUSS SYSTEM

Dscaff's DXS is a heavy-duty alloy truss system that provides innovative engineering solution for industrial access challenges and multipurpose modular structures.

Specialized in multitudes of temporary and permanent structural applications including special access platform, access tower, temporary shelter and warehouse



Key advantages:




Highly modular

- Can be used as horizontal, vertical or curved solutions



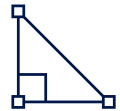
Simple to use & install

- Light weight with minimal components required



Exceptional loading capacity

- Maximum loading capacity of 10,000 Pa/m²



Full engineering support

- Long span access solutions (up to 60m)



COMPLETE RANGE OF SAFETY SYSTEMS

- Complete range of safety systems that are in accordance with the international standards and best practice procedures in Fall Prevention and Fall Protection
- Dscuff adapts and implements Construction Design and Management (“CDM”) into its safety products, offering systemized passive and collective Fall Arrest solutions in compliance with EN13374 and EN1263-1 Standards



Fall Prevention Safety Barrier

Engineered and optimized product for rapid deployment. Comply with **EN13374:2005 Class A Edge Protection**.

The system reduces the number of active components compared with traditional tube and fitting handrails by **70%**, significantly increasing safety and productivity on construction sites

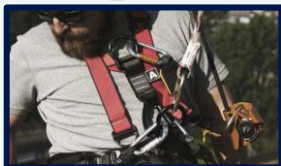


Fall Arrest Safety Catch Nets

Complied with **EN1263-1**, the “Type T” Modular Safety Catch Net Systems is designed to be completely assembled on ground level, where there is no risk of falling from height, subsequently engineering away the hazard

The systems can easily be modified to suit any type of structures in the construction industry

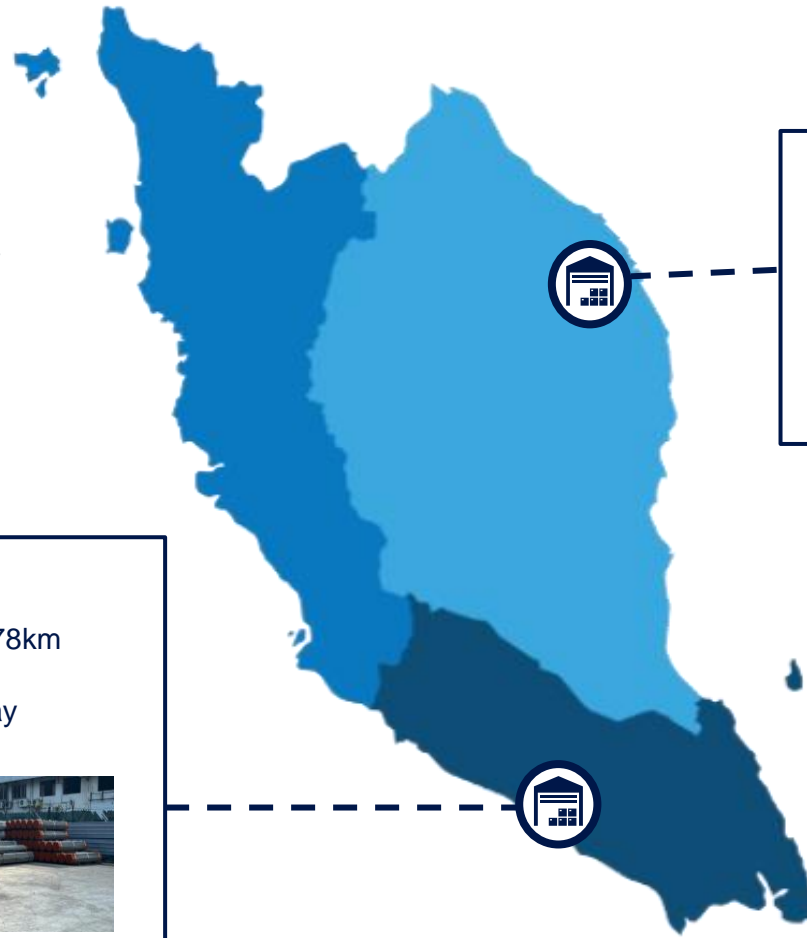
FALLPROTEC



Fallprotec

Dscuff has an **exclusive distribution agreement** with global market leader Fallprotec to distribute its safety products in Malaysia
Fallprotec designs and supplies Vertical and Horizontal Fall Arrest and Safe Access solutions that complies with the **European and US standards** for permanent roofing systems

WE HAVE STRATEGICALLY LOCATED WAREHOUSES ACROSS 2 DIFFERENT STATES IN PENINSULAR MALAYSIA TO CATER TO CUSTOMERS DEMAND AT A MOMENT'S NOTICE...



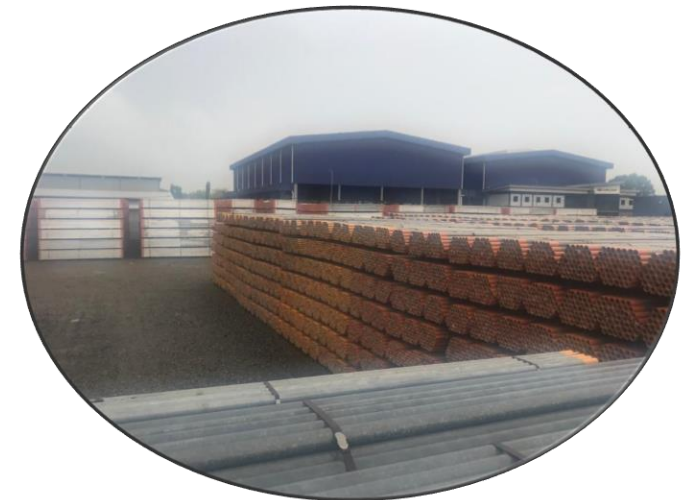
Kemaman Warehouse (East Coast)

- Adjacent to Telok Kalong Industrial Park



Tangkak Warehouse (West Coast)

- ~50km away from Tanjung Bruas Port and ~78km away from Kuala Sungai Linggi Port
- Easy access to/from North-South Expressway





OUR BUSINESS OPERATIONS, PRODUCTS AND SOLUTIONS COMPLY TO THE HIGHEST QUALITY CERTIFICATIONS AND MEET STRINGENT INTERNATIONAL QUALITY REQUIREMENTS

Products comply with Malaysian & International Standards



Dscaff's Integrated Management System Certification



Environmental

Safety & Health

Quality

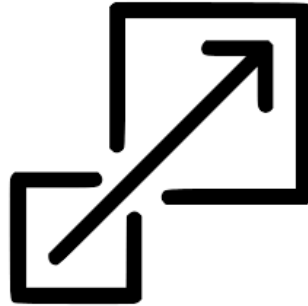


Dscaff is the first scaffolding solutions company in the region to achieve ISO 45001 certification

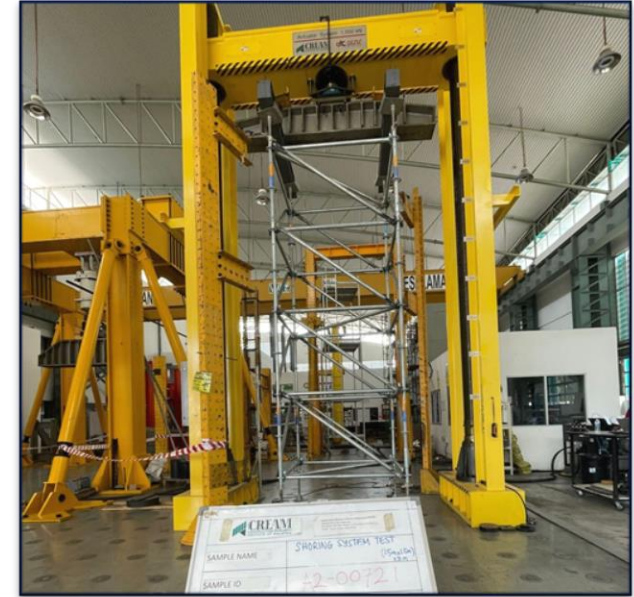


MATERIAL TESTING & CERTIFICATIONS

Product : USED MODULAR SYSTEM SCAFFOLDING & SHORING
Type of Test : Global Test Procedure
Test Method/ Requirement : CIS 23: 2023 – Product Conformity for Falsework in Construction
 BS EN 12813:2004 – Temporary Works Equipment – Load Bearing Towers of Prefabricated Components – Particular Methods of Structural Design and as per Agreed by Client
Date of Issue : 13th July 2023
Name of Client : DSCAFF ENGINEERING SDN BHD
Address (Office) : No.13A-1, Menara 1MK, Kompleks 1 Mont Kiara, No.1, Jalan Kiara, Mont Kiara 50480 Kuala Lumpur
Sampling Location : Lot 406, Jalan Klang Banting, Batu 15, 42600 Jenjarom, Selangor
Job Ref. No. : AMS/23130/DSCAFF/01
Test Report Series : 1 of 4
TPIB No. : 7/23 (L)
Sample : SAS Support Scaffold Tower
Date of Received : 4th July 2023
Date of Test : 5th July 2023
Tested By : Mohd Azizi, Ramlee & Zulharith
Witnessed By : Siva Kumar & Aswat Jamaluddin



(1) SAS Support Scaffold Tower shoring load testing by



CHARACTERISTIC	VALUE	
Sample ID	A2-00721	
Maximum load (kN)	629.73	
Distributed load to each standard/leg (kN)	157.43	
Horizontal displacement (mm)	LVDT 1	LVDT 2
	- 4.00	+ 1.29
Vertical displacement (mm)	LVDT 3	LVDT 4
	+ 0.86	+ 2.04
Requirement load (kN) :	70 kN /Leg	
Refer Appendix 1 : Statical Calculation for Typical 5.0m SAS Support Tower	280 kN/Tower	
(This data is provided by Dscuff Engineering Sdn Bhd)		
Ratio (between maximum load and requirement load)	2.25	
Observation at maximum load	Buckling was observed at maximum load	
Remarks	COMPLY	



COMPLY

Prepared by :

Name : **Wan Norhasiah Wan Bidin**
Engineer
Construction Research Institute of Malaysia (CREAM)



Approved by :

Name : **Ahmad Mazim Abdul Rahim**
Lab Manager
Makmal Kerja Raya Malaysia
Construction Research Institute of Malaysia (CREAM)

MATERIAL TESTING & CERTIFICATIONS

Product : MODULAR SCAFFOLDING SYSTEM

Type of Test : Test for the Verification of the Elastic Buckling Load Factor

Test Method/ Requirement : MS 1462-3-2: 2021– Metal Scaffolding – Part 3: Prefabricated Scaffoldings – Section 2: Particular Methods of Structural Design for Steel and Aluminium Modular System Scaffoldings & as per Agreed by Client

Date of Issue : 20th September 2023

Name of Client : DSCAFF ENGINEERING SDN BHD

Address (Office) : No.13A-1, Menara 1MK, Kompleks 1 Mont Kiara, No.1, Jalan Kiara, Mont Kiara, 50480 Kuala Lumpur.

Job Ref. No. : AMS/23179/DSCAFF/01

Test Report Series : 11 of 11

TPIB No. : N/A

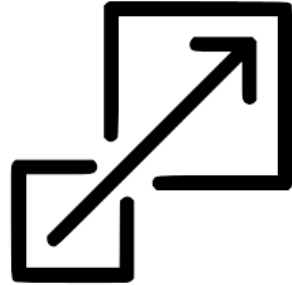
Sample : 5.4m High Façade Access SAS Scaffold

Date of Received : 6th September 2023

Date of Test : 18th September 2023

Tested By : Mohd Azizi, Ramlee & Zulharith

Witnessed By : Mr. Siva Kumar



(2) 5.4m High Façade Access SAS Scaffold Verification of the Elastic Buckling Load Factor by



Test Result :

CHARACTERISTIC	VALUE
Sample ID	A2-01145
(A) Total mass of spreader beams, (kN)	2.13
(B) Maximum load (kN)	428.46
(A+B) Actual maximum load applied (kN)	430.59
Maximum displacement (normal direction to the vertical load) (mm)	+ 0.15
Maximum displacement (parallel to the facade) (mm)	+ 1.01
Requirement ultimate load (kN) – <i>Refer Statical Calculation for 5.4m High Façade Access Scaffold (Additional)- 01-CIDB-01-SC04 (Add).</i>	315.0
<i>This data is provided by Dscuff Engineering Sdn Bhd)</i>	
Observation	Buckling was observed at maximum load.

Prepared by :

Name : **Wan Norhasiah Wan Bidin**
Engineer
Construction Research Institute of Malaysia (CREAM)



Approved by :

Name : **Ahmad Hazim Abdul Rahim**
Lab Manager
Makmal Kerja Raya Malaysia
Construction Research Institute of Malaysia (CREAM)



COMPLY

OUR OUTSTANDING TRACK RECORD SPEAKS FOR ITSELF!

- We are well-trusted by local and MNC clientele and the go-to scaffolding service provider as we have **consistent high-quality products and solutions** coupled by our **ability to take on urgent requests**; afterall we are **the largest scaffolding bank** in the region!
- We have an **experienced multi-disciplinary team** trained to provide innovative, efficient and bespoke solutions to solve complex engineering challenges
- **We have completed multiple iconic and mega projects** across various specialized industries



TRX KL



Klang Valley MRT



PETRONAS Euro-5 Refinery Plant



Jakarta Elevated Toll Road



TRX KL by LENDLEASE



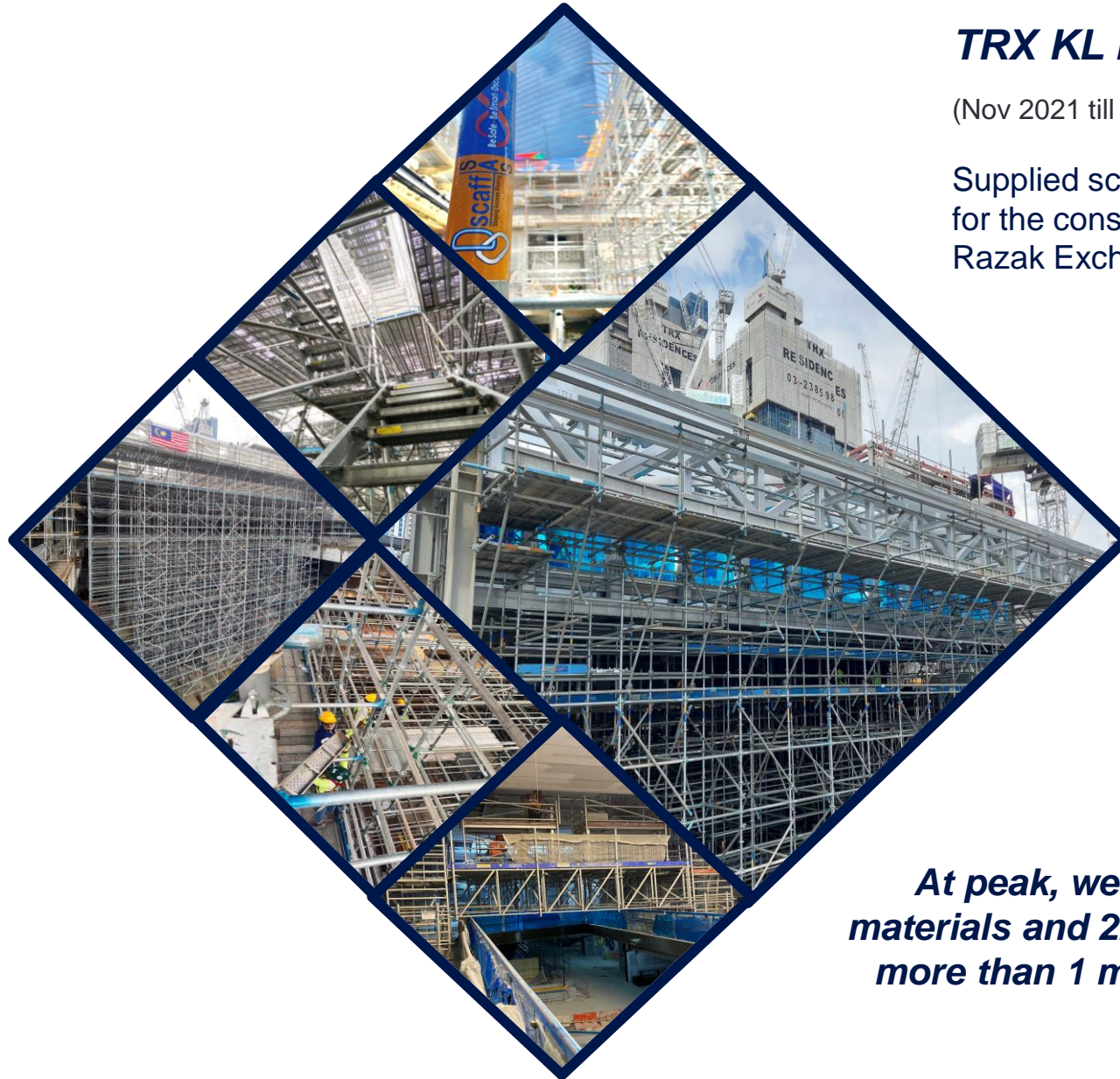
(Nov 2021 till Nov 2023)

Supplied scaffolding, stairform and manpower for the construction of the renowned Tun Razak Exchange (TRX).

Work packages include:

1. Access and heavy-duty shoring using our Modular SAS scaffold for the construction of the TRX Mall and the Apple Store
2. Stairform for the TRX Mall, Office and Hotel Towers
3. DXS mobile alloy bridge, providing access over voids

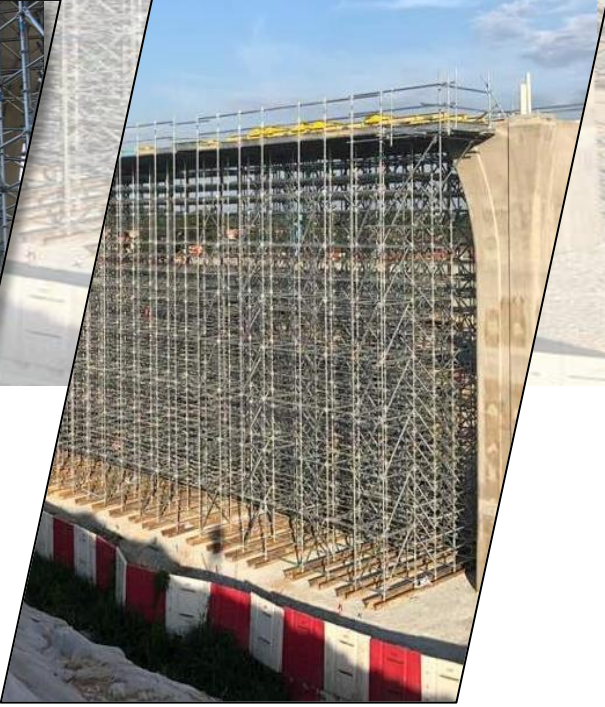
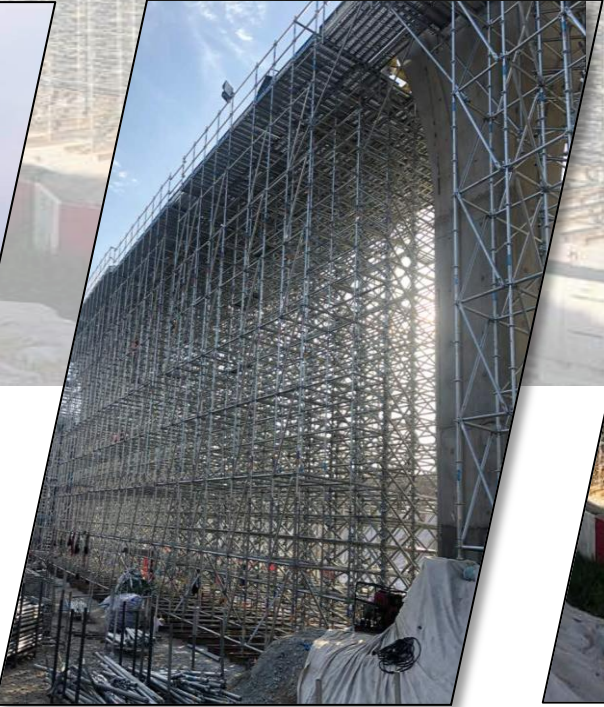
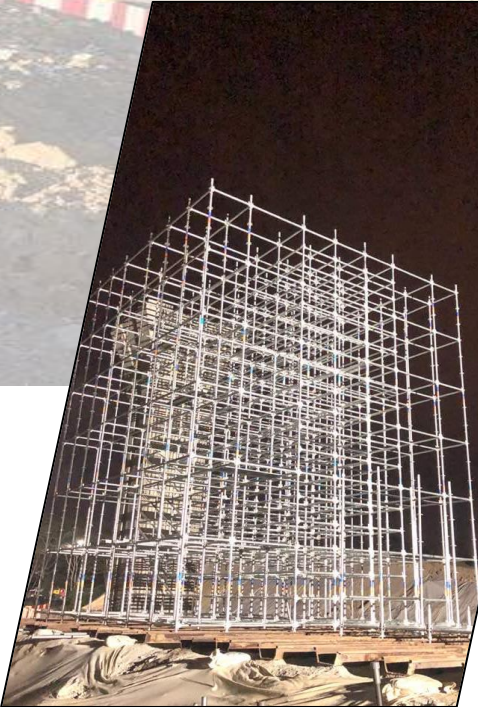
At peak, we have 2,000 tonnes of materials and 220men at site & recorded more than 1 million safe manhours at zero LTI.



KLANG VALLEY MASS RAPID TRANSIT 2 (KVMRT2)



Supply and install of heavy-duty shoring support for segmental box girders at V205 Sungai Besi & V207 Seri Kembangan





PETRONAS Euro-5 Refinery Plant, Melaka

(Jan 2019 till Nov 2020)

Full scale contracting project which encompassed 1.5mil m³ of scaffolding throughout the refinery plant's construction, including for the construction of the 125-meter Flare Stack, which is one of the highest standing scaffolding structures in the country - recorded more than 1.2 million safe manhours at zero LTI.

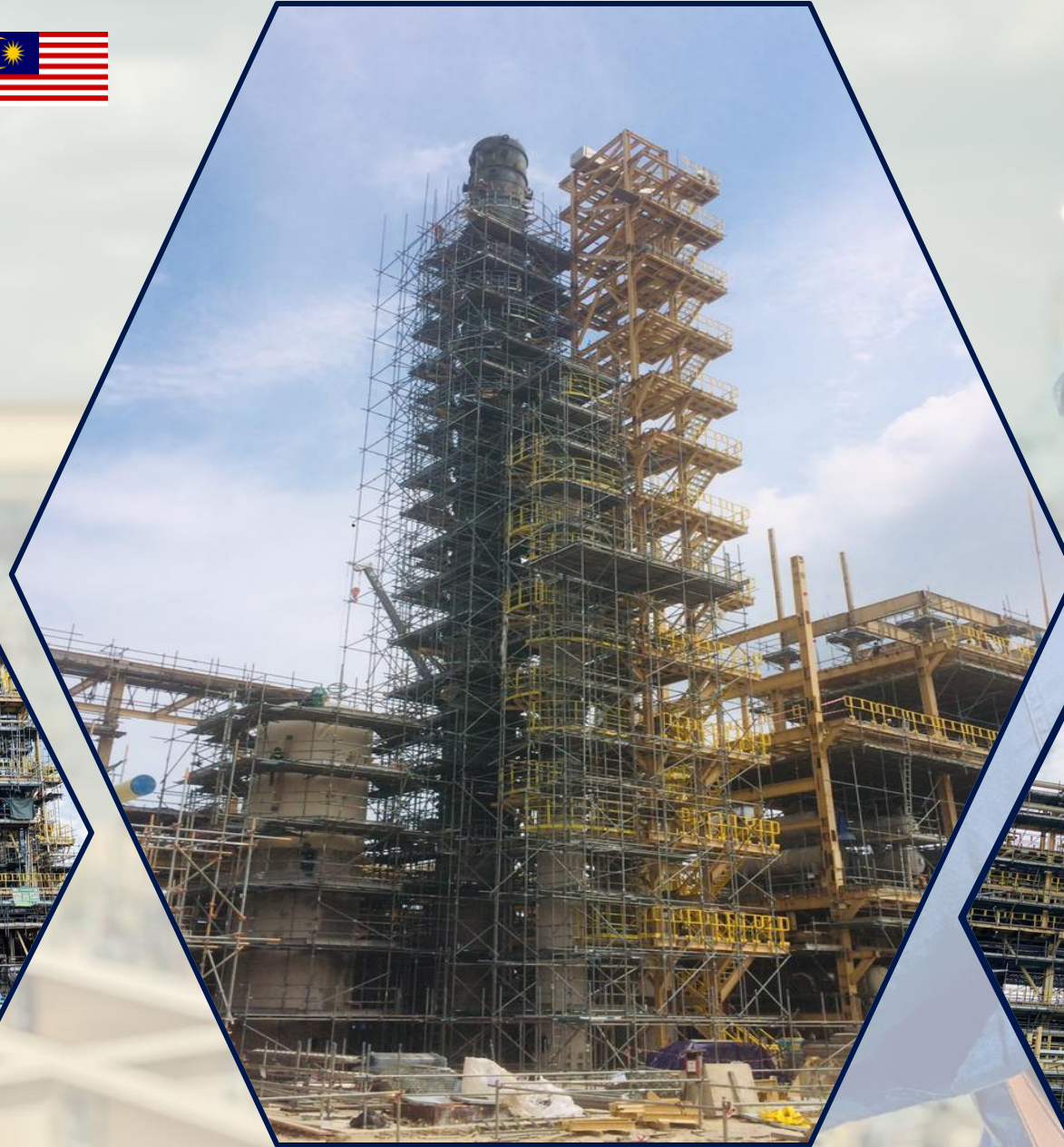


ATB PU, Tanjung Bin



(Dec 2020 till July 2022)

Full scale scaffolding contracting work including piping, bundle pulling and steel beam modification scopes. At peak, there were more than 220 men on site and recorded 1.4 million safe manhours at zero LTI.



OVERSEAS PROJECTS - INDONESIA



Jakarta Elevated Toll Road

(Sept 2018)



Scaffolding contracting at Saipem, Karimun Island

(June 2023 - ongoing)



Executed the design, fabrication and supply of modular solution to cater for casting crossheads over live traffic.



Deployed over 2,200 tonnes of scaffolding materials to an ongoing project in the Saipem fabrication yard located at Karimun Island.



CONTACT US TODAY!



Head Office

13A-1 Premier Suite, Menara 1MK,
No.1, Jalan Kiara, Mont Kiara,
50480 Kuala Lumpur,
Malaysia.



info@dscaff.com



+603 6201 5722



<http://www.dscaff.com>